



# Pancake Pantry

628 Parkway Gatlinburg, TN 37738

A GATLINBURG TRADITION FOR BREAKFAST & LUNCH

HOURS OF OPERATION

7 am-4 pm June through October

7 am-3 pm the rest of the year

Open every day except Thanksgiving and Christmas

Phone 865-436-4724

[www.pancakepantry.com](http://www.pancakepantry.com)

Breakfast Menu served all day

Luncheon Menu served after 11:30 am

The Pancake Pantry, a family-owned restaurant serving customers since 1960, invites you to share a tradition.

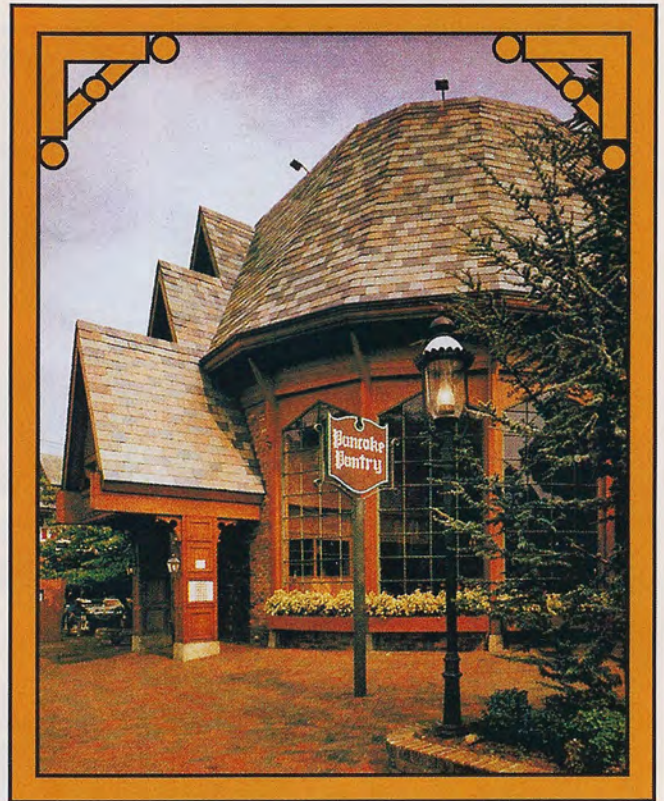


PLACE  
STAMP  
HERE



# Pancake Pantry

A GATLINBURG TRADITION  
FOR BREAKFAST & LUNCH





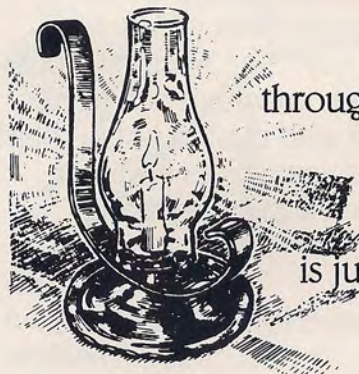
Since 1960 when the Pancake Pantry became Tennessee's first pancake house, visitors to Gatlinburg have made dining with us a tradition. What keeps them coming back? It's the real butter, the honest-to-goodness fresh whipped cream and everything made from scratch. And it's also the warm atmosphere of century-old brick, rich oak and rustic copper.

Becoming a tradition requires a special quality, a commitment to excellence, a willingness to experiment, test and develop new dishes for your pleasure and delight, while retaining the favorites from years past.

Whether you join us for an early breakfast, midday brunch or afternoon snack,

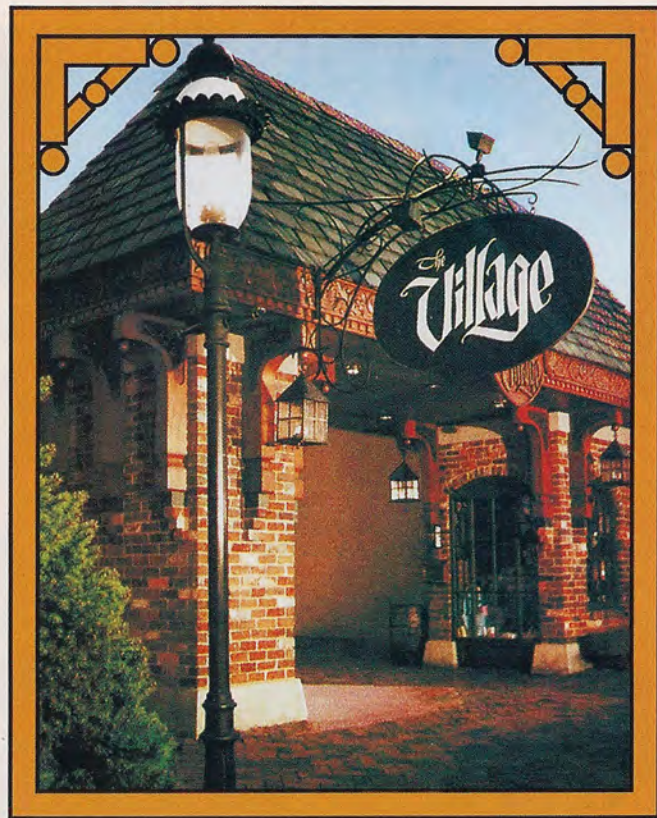
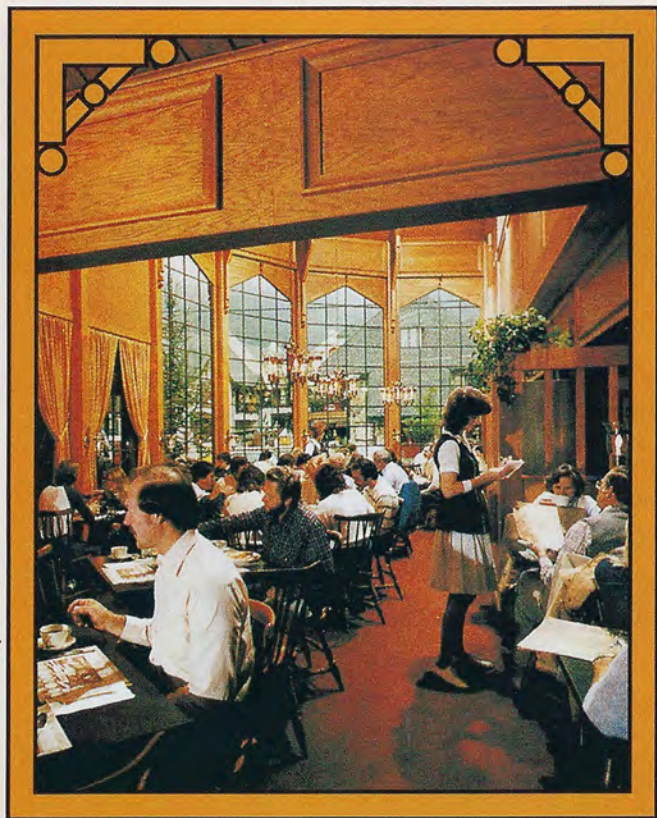
your visits will be enhanced by fast courteous service and delicious food—all at a reasonable price.

Share your dining time with us and let the Pancake Pantry become a part of your Gatlinburg tradition.



Afterwards, stroll through *The Village*

A Shopping Place. The brick entrance is just a few yards away.



# Breakfast

Breakfast...what a delightful challenge! We offer twenty-four different varieties of pancakes, many waffles, farm fresh eggs, sizzling ham, bacon or country sausage and golden butter-fried hash brown potatoes.

Choose the Old Fashioned Buttermilk Pancakes and enjoy a plate full of the lightest, most tender pancakes you've ever tasted. Maybe you'll select the Austrian Apple-Walnut Pancakes covered with a rich apple cider compote made with melted butter, black walnuts, apples and sweet spices and then topped with powdered sugar and real whipped cream.

Peach Delight, Blueberry, Whole Wheat, Apricot Lemon...the list goes on and on.

Perhaps you would prefer, for variety, a delicious Strawberry, Pecan or Chocolate Chip Waffle; some served with light fluffy whipped butter and syrup and others with fruit compote and fresh whipped cream. As you may have guessed, we make all of our batters from fresh ingredients and prepare each syrup and compote in our own kitchen.

If omelettes are your choice, we have seven varieties with our Ham & Cheese and Western omelettes being the most popular.

So come dine with us and tempt your taste buds with a treat available nowhere else.



Blueberry Pancakes

# Gourmet Sandwiches

Selections from our Luncheon Menu make any meal a special occasion.

From around the world comes inspiration for our Gourmet Sandwiches. Order the Dutch Diplomat and experience an award winning taste sensation of special trimmings atop ham, Swiss cheese and turkey on three decks of rye. Or maybe you would prefer a Polish Aristocrat, Polynesian Delight or British Dipper among other distinctive choices.

Ground beef lovers will be tempted by the savory Viennaburger or the most unusual Blue Ribbon Hamburger.

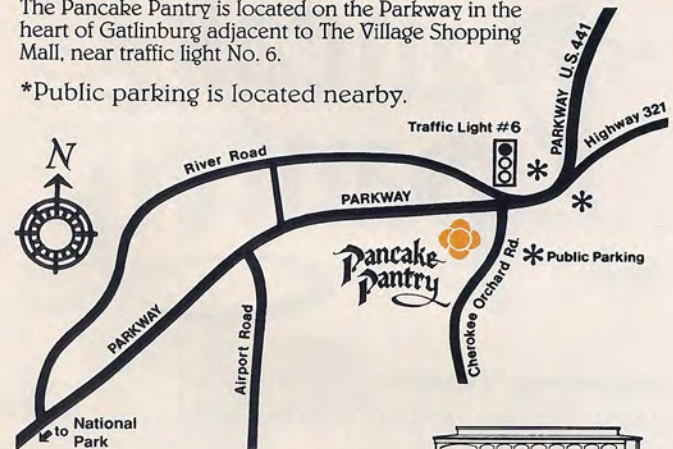
Our soups are all homemade and the garden fresh salads are especially enjoyable topped with our own House Dressing.

## BOX LUNCHES

can be prepared for a picnic in the Park.

The Pancake Pantry is located on the Parkway in the heart of Gatlinburg adjacent to The Village Shopping Mall, near traffic light No. 6.

\*Public parking is located nearby.



The Trolley runs frequently and stops nearby at Traffic Light No. 6.



Dutch Diplomat

Provided By [www.DiscoverTheSmokies.com](http://www.DiscoverTheSmokies.com) On February 12th, 2010

(Not Affiliated With Pancake Pantry Whatsoever)

For Travel Planning Use Only - ALL Data / Prices Subject To Change Without Notice