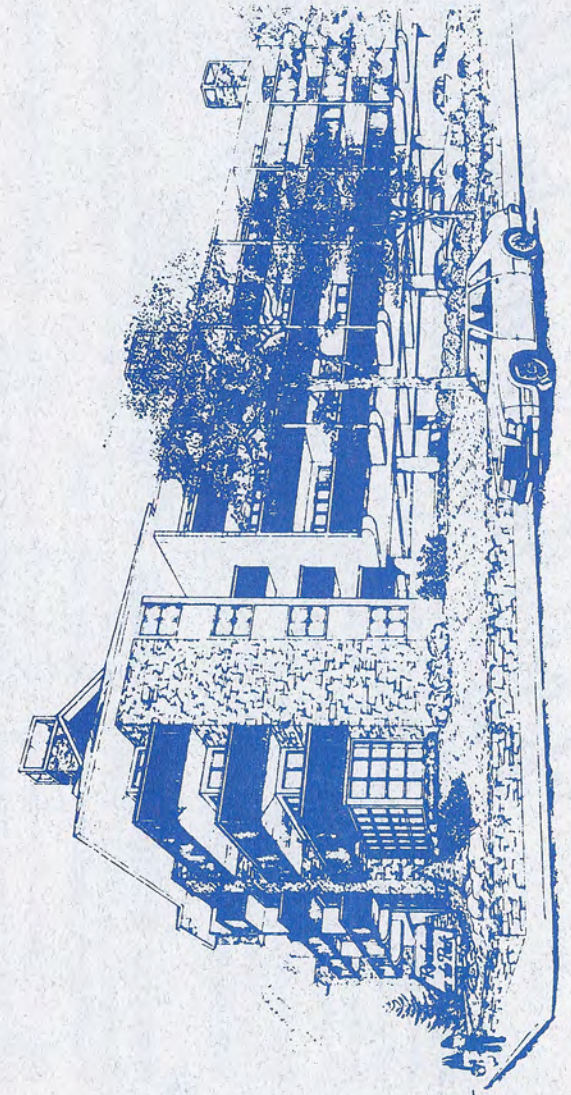


*Riverhouse at the Park*

# Riverhouse at the Park



# Riverhouse at the Park

Riverhouse at the Park is uniquely located at the corner of River Road and Ski Mountain Road at the entrance of the Great Smoky Mountains National Park. This quiet riverfront site is within easy walking distance of Gatlinburg's finest restaurants and shopping areas, and it offers easy access to the National Park both by car and a scenic riverwalk hiking trail. Winter guests will find the Ski Resort just up the road and the aerial tram only a block away. The Gatlinburg Trolley stops at the motel on a regular schedule in the busy season. Wireless Internet Available

Riverhouse at the Park features large rooms, private balconies, whirlpool baths, native stone gas log fireplaces, heated pool with hot tub and a continental breakfast (homemade donuts, fresh ground coffee, orange juice) served directly to your room. All floors are easily accessible by elevator.

## Accommodations Offered

**PARKVIEW ROOMS** - Rooms with a fabulous view of the Little Pigeon River flowing out of the National Park and roaring over a dam. These are OUR FINEST ROOMS with a location on the river that is unsurpassed in the Gatlinburg area. A stay in these luxurious rooms will always be remembered. Occupancy per room: 2 adults.

**GRAND KING** - Elaborate king rooms beautifully decorated with bedroom and living room furnishings with private balconies, whirlpool bath / walk in shower and console TV. Occupancy per room: 2 adults.

**JACUZZI KING** - Beautifully decorated king room with a large two person jacuzzi in the bedroom area. Occupancy per room: 2 adults.

**MOTEL ROOMS** - Large rooms with one king or two queen beds offering whirlpool baths, gas log fireplaces, dressing areas with plenty of storage, remote control color TV's, refrigerators and microwaves. All of these rooms have private balconies with 30 located on the Little Pigeon River.

<b>2010 RATES</b> NO FIRES (APRIL 22 - SEPT. 29)	<b>Sorry, NO PETS!</b>	<b>OFF RIVER</b> 1 KING or 2 QUEENS	<b>ON RIVER</b> 1 KING or 2 QUEENS	<b>JACUZZI</b> KING	<b>GRAND</b> KING	<b>PARK</b> VIEW
<b>Jan. 3 - Mar. 20, 2010</b> (Sun. - Thur.) (Fri. - Sat.) (Jan. 14 & 17) (Feb. 11 & 14)		\$46.00 \$76.00	\$56.00 \$86.00	\$81.00 \$122.00	\$92.00 \$113.00	\$125.00 \$142.00
<b>Mar. 21 - May 26</b> (Sun. - Thur.) (Fri. - Sat.)		\$62.00 \$77.00	\$75.00 \$95.00	\$103.00 \$120.00	\$107.00 \$118.00	\$142.00 \$148.00
<b>(HOLIDAY'S)</b> May 27 - May 30 July 1 - July 4 Sept 2 - Sept. 5		\$118.00	\$123.00	\$148.00	\$148.00	\$168.00
<b>May 31 - Aug. 7</b>		\$88.00	\$100.00	\$122.00	\$122.00	\$142.00
<b>Aug. 8 - Sept. 1</b>		\$84.00	\$94.00	\$120.00	\$122.00	\$142.00
<b>Sept. 6 - Sept. 29</b> (Sun. - Thur.) (Fri. - Sat.)		\$76.00 \$93.00	\$89.00 \$108.00	\$106.00 \$123.00	\$110.00 \$123.00	\$148.00 \$160.00
<b>Sept. 30 - Oct. 30</b> (Sun. - Thur.) (Fri. - Sat.)		\$104.00 \$115.00	\$119.00 \$130.00	\$134.00 \$145.00	\$149.00 \$160.00	\$170.00 \$180.00
<b>Oct. 31 - Nov. 23</b> (Sun. - Thur.) (Fri. - Sat.)		\$76.00 \$87.00	\$88.00 \$99.00	\$107.00 \$118.00	\$117.00 \$128.00	\$147.00 \$158.00
<b>Nov. 24 - Nov. 27</b>		\$118.00	\$128.00	\$148.00	\$173.00	\$173.00
<b>Nov. 28 - Dec. 23</b> (Sun. - Thur.) (Fri. - Sat.) & (Dec. 2)		\$47.00 \$93.00	\$56.00 \$103.00	\$82.00 \$123.00	\$92.00 \$130.00	\$127.00 \$153.00
<b>Dec. 24 - Jan. 1, 2011</b>		\$118.00	\$128.00	\$148.00	\$173.00	\$173.00

To Cancel or Change a reservation, our policy is to call by NOON TWO DAYS BEFORE ARRIVAL with the following exceptions: Memorial Day Holidays, July 4th Holidays, Labor Day Holidays, October, Thanksgiving & Christmas/News Years Holidays require a ONE WEEK CANCELLATION NOTICE. Reservations of 3 or more rooms will require a CANCELLATION NOTICE of 72 Hours or more depending on the number of rooms booked. Advance deposits will not be refunded if CANCELLATION POLICY is not met. Special Events and Holidays require a 3 or 4 night stay. Check-In Time after 2:00 P.M. and Check-Out Time is 12:00 NOON.

Web-Site Address: [www.riverhousemotels.com](http://www.riverhousemotels.com) Email Address: [riverhouse@riverhousemotels.com](mailto:riverhouse@riverhousemotels.com)

For Reservations, Please call 865-436-2070 or Write:

**RIVERHOUSE at the PARK** 205 Ski Mountain Rd. Gatlinburg, TN 37738

Provided By [www.DiscoverTheSmokies.com](http://www.DiscoverTheSmokies.com) On February 17th, 2010

(Not Affiliated With Riverhouse At The Park Whatsoever)  
For Travel Planning Use Only - ALL Data / Prices Subject To Change Without Notice